

## INSTRUCTIONS

1. Bid packets are available at the Bois de Sioux Watershed District office located at 704 Highway 75 South, Wheaton, MN 56296. You may also request a bid packet by email ([bdswd@runestone.net](mailto:bdswd@runestone.net)) or by phone (320/563-4185).
2. The locations of bid parcels are shown on the map included in the bid packet. Please refer to page 2 for acreage.
3. All bids must be in writing on the prescribed forms on pages 3 and 4, and must include the bidder's printed name, signature, address, and phone number.
4. Bidders may bid on any or all of the seven leases.
5. Bids are to be received no later than 4:00 p.m. on December 12, 2017, in the Bois de Sioux Watershed District office located at 704 Highway 75 South, Wheaton, MN 56296. Bids may also be faxed to 320/563-4987.
6. Bids will be opened and tabulated. They will be presented to the Bois de Sioux Watershed District Board of Managers on December 13, 2017, at their regular board meeting at 12:30 p.m.
7. Bidders present will be given the opportunity to raise their bid orally at this meeting. Anyone not submitting a written bid by the above deadline will not be allowed to bid orally at the meeting.
8. The winning bidder will be required to sign a lease for Crop Year 2018.
9. Questions are to be directed to the Bois de Sioux Watershed District Office.

**The Bois de Sioux Watershed District reserves the right to reject any or all bids. The Bois de Sioux Watershed District also reserves the right to waive any or all irregularities.**

## INFORMATION

### REDPATH & GORTON TOWNSHIP LAND SETS FOR BID

<b>#18-01</b>	<b>SECTION 17, REDPATH, TRAVERSE COUNTY, MINNESOTA</b> NE1/4, Section 17	T128N R45W	<b>TOTAL: 153 acres, more or less</b> 153 Acres
<b>#18-02</b>	<b>SECTION 21, REDPATH, TRAVERSE COUNTY, MINNESOTA</b> E1/2, Section 21 SW1/4, Section 21	T128N R45W T128N R45W	<b>TOTAL: 456.4 acres, more or less</b> 313.5 Acres 142.9 Acres
<b>#18-03</b>	<b>SECTION 22, REDPATH, TRAVERSE COUNTY, MINNESOTA</b>		<b>TOTAL: 614 acres, more or less</b>
<b>#18-04</b>	<b>SECTION 23, REDPATH, TRAVERSE COUNTY, MINNESOTA</b> NW1/4, Section 23 NE1/4, Section 23 S1/2, Section 23	T128N R45W T128N R45W T128N R45W	<b>TOTAL: 400.77 acres more or less</b> 61.77 Acres 30 Acres 309 Acres
<b>#18-05</b>	<b>SECTIONS 24 &amp; 25, REDPATH, TRAVERSE COUNTY, MINNESOTA</b> NW1/4 & W1/2-NE1/4, Section 24 E1/2 of NE1/4, Section 24 S1/2, Section 24 W1/2 of NW1/4, Section 25	T128N R45W T128N R45W T128N R45W T128N R45W	<b>TOTAL: 379.23 Acres more or less</b> 47.86 Acres 16.16 Acres 237.1 Acres 78.11 Acres
<b>#18-06</b>	<b>SECTION 19, GORTON, GRANT COUNTY, MINNESOTA</b> SW1/4, Section 19 Govt. Lot 2 & SE1/4 of NE1/4 SE1/4, Section 19 NE1/4, Section 19	T128N R44W T128N R44W T128N R44W T128N R44W	<b>TOTAL: 202.62 Acres more or less</b> 136.26 Acres 31.27 Acres 9.59 Acres 25.50 Acres

### TINTAH TOWNSHIP LAND SET FOR BID

<b>#18-01</b>	<b>SECTION 34, TINTAH, TRAVERSE COUNTY, MINNESOTA</b> SW1/4, Section 34	T129N R45W	<b>TOTAL: 153.63 acres, more or less</b> 153.63 Acres
---------------	--	------------	--

## BID SUBMISSION

BIDDER'S PRINTED NAME		TELEPHONE
MAILING ADDRESS		
CITY	STATE	ZIP
BIDDER'S SIGNATURE		DATE

### REDPATH & GORTON TOWNSHIP LAND SETS FOR BID

<b>#18-01</b>	<b>SECTION 17, REDPATH, TRAVERSE COUNTY, MINNESOTA</b> NE1/4, Section 17	<b>T128N R45W</b>	<b>TOTAL: 153 acres, more or less</b> 153 Acres
YOUR BID: \$			

<b>#18-02</b>	<b>SECTION 21, REDPATH, TRAVERSE COUNTY, MINNESOTA</b> E1/2, Section 21 SW1/4, Section 21	<b>T128N R45W</b> <b>T128N R45W</b>	<b>TOTAL: 456.4 acres, more or less</b> 313.5 Acres 142.9 Acres
YOUR BID: \$			

<b>#18-03</b>	<b>SECTION 22, REDPATH, TRAVERSE COUNTY, MINNESOTA</b>	<b>TOTAL: 614 acres, more or less</b>
YOUR BID: \$		

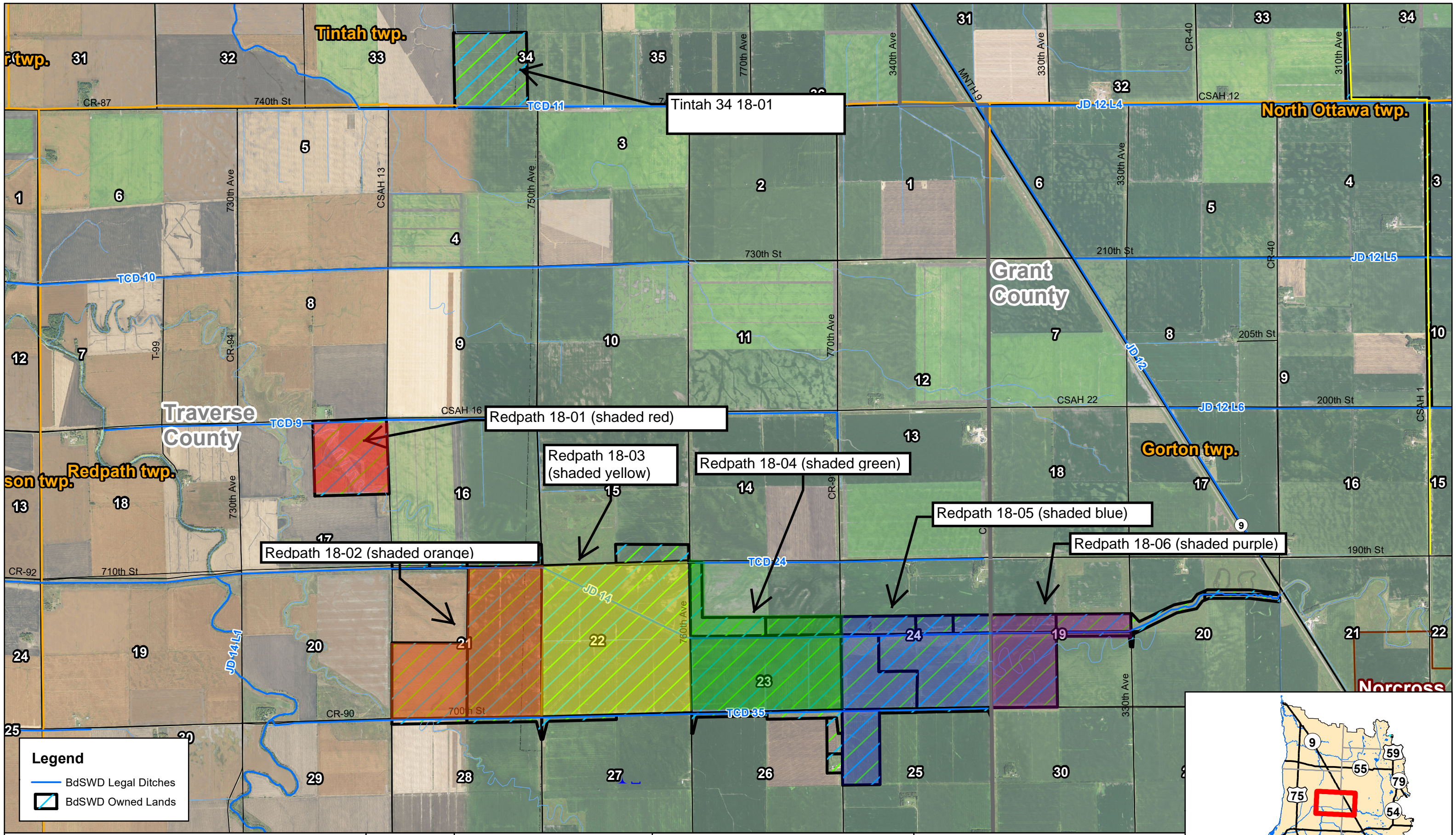
<b>#18-04</b>	<b>SECTION 23, REDPATH, TRAVERSE COUNTY, MINNESOTA</b>	<b>TOTAL: 400.77 acres more or less</b>
	NW1/4, Section 23	T128N R45W 61.77 Acres
	NE1/4, Section 23	T128N R45W 30 Acres
	S1/2, Section 23	T128N R45W 309 Acres
<b>YOUR BID: \$</b>		

<b>#18-05</b>	<b>SECTIONS 24 &amp; 25, REDPATH, TRAVERSE COUNTY, MINNESOTA</b>	<b>TOTAL: 379.23 Acres more or less</b>
	NW1/4 & W1/2-NE1/4, Section 24	T128N R45W 47.86 Acres
	E1/2 of NE1/4, Section 24	T128N R45W 16.16 Acres
	S1/2, Section 24	T128N R45W 237.1 Acres
	W1/2 of NW1/4, Section 25	T128N R45W 78.11 Acres
<b>YOUR BID: \$</b>		

<b>#18-06</b>	<b>SECTION 19, GORTON, GRANT COUNTY, MINNESOTA</b>	<b>TOTAL: 202.62 Acres more or less</b>
	SW1/4, Section 19	T128N R44W 136.26 Acres
	Govt. Lot 2 & SE1/4 of NE1/4	T128N R44W 31.27 Acres
	SE1/4, Section 19	T128N R44W 9.59 Acres
	NE1/4, Section 19	T128N R44W 25.50 Acres
<b>YOUR BID: \$</b>		

**TINTAH TOWNSHIP LAND SETS FOR BID**

<b>#18-01</b>	<b>SECTION 34, TINTAH, TRAVERSE COUNTY, MINNESOTA</b>	<b>TOTAL: 153.63 acres, more or less</b>
	SW1/4, Section 34	T129N R45W 153.63 Acres
<b>YOUR BID: \$</b>		



**Legend**

- BdSWD Legal Ditches
- BdSWD Owned Lands

**Redpath and Tintah Twn**  
**Traverse County**  
**Bois de Sioux Watershed District, MN**

Created By: NHT Date Created: 09/29/17 Date Saved: 10/27/17 Date Plotted: 09/29/17 Date Exported: 10/27/17  
 Plotted By: james.guler Parcel Date: XX/XX/14 Aerial Image: 2015 SIDs Elevation Data: IWI Lidar  
 Horizontal Datum: NAD 1983 UTM Zone 14N Vertical Datum: NAVD1988  
 T:\BaseData\MN\Bois\_de\_Sioux\BdSWD\_Basemap\_11X17\_Landscape.mxd

N

0 2,500 5,000 Feet

1 inch = 3,126 feet

